

RTS SERIES

RIVEER TREATMENT SYSTEMS

RTS
5000

RTS
4000

RTS
3000

RTS
1000

RTS
500

RIVEER

RIVEERTM

Engineered Wash Water
Recovery Systems

The Solution is Clear with RiveerSM

RTS SERIES

Riveer Treatment Systems



WORLD CLASS WATER TREATMENT AND RECYCLING

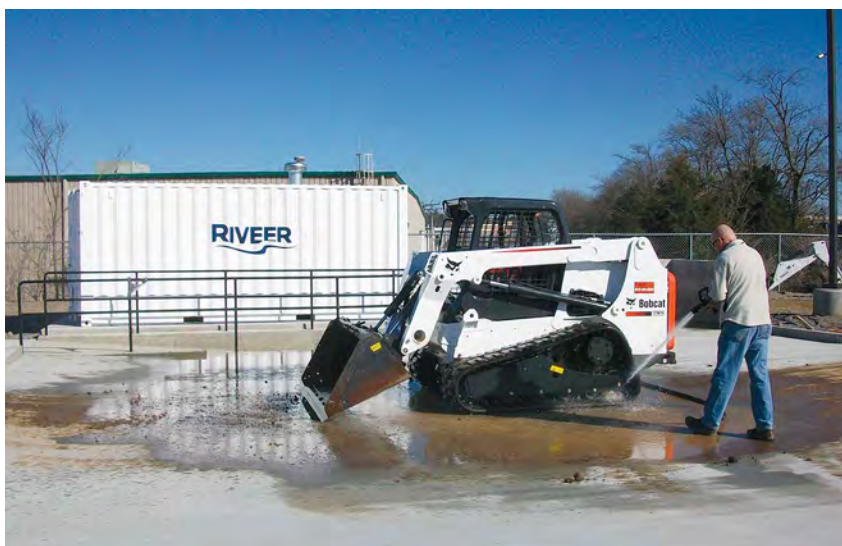
The RTS Series of closed loop water treatment systems have been specifically designed to be used in wash rack applications. The systems recycle wash water from the above-ground wash racks, in-ground sumps, skid steer troughs, conveyors or trench drains. The zero discharge process allows environmentally safe cleaning by using simple filtration processes included in all models: built-in oil and water separation, ozone injection, oil coalescing, oil skimming, absolute filtration and more. Not only can RTS Series be used for equipment washing and corrosion control, but it can also save powder-coaters tens of thousands of dollars by recycling phosphate pretreatment chemicals. Whether you are degreasing or acid washing parts, or demucking equipment, the RTS Series can save you time and money while avoiding EPA fines.

FAST TO SET UP, EASY TO OPERATE AND SIMPLE TO MAINTAIN

- RTS Systems are assembled and ready to be hooked up to a concrete wash pad, spray booth or a modular Riveer Rack system. Professional technicians ensure the system is properly installed and that your operators and maintenance personnel are fully trained.
- A detailed manual and maintenance schedule accompanies every system in order to make operation and maintenance simple. Need help? We're just a phone call away.

Riveer RTS meets all US and CE electric standards: UL, TUV, IEC, NEC, NFPA.

Covered by patent numbers 6,021,792 and 6,164,298 with others pending



RTS 500



RTS 500 – LIGHT SOLIDS AND OILS

The RTS 500 is a compact, efficient wash water filtration system designed to handle waste streams containing light solids and oils, such as industrial parts degreasing and maintenance equipment washing. The RTS 500 filters and treats water for reuse or proper discharge in compliance with EPA and municipal regulations. The all-stainless steel filtration system features inclined plate separators to settle solids in a large initial settling chamber. Oil is coalesced by passing through a cube of porous polypropylene and then removed from the water by a large disc skimmer. High-pressure, high-flow multimedia filtration removes suspended solids, heavy metals and volatile organic compounds (VOCs). This filter is automatically back-washed when needed. A final absolute polishing filter cleans the water to 5 microns before sending it to a holding tank. Water in the system is continuously circulated and injected with ozone or bacteria to prevent the onset of unwanted odors.



FEATURES

- One button GripStart™ operation:
 - Squeeze pressure washer gun and system starts
 - Release gun and walk away
 - System automatically cycles and shuts down
- Diaphragm pump recovers wash water from the wash rack or pad
- Cast iron sump pump for effluent also available
- 500-gallon holding tank
- NEMA 4 control panel
- Features a 3-chamber stainless steel settling tank with coalescing and absolute filtration
- 24/7 programmed ozone injection to mitigate bacteria

MARKETS SERVED

- Industrial plants
- Warehouses
- Rental facilities

APPLICATIONS

Designed for light mud loads found in:

- Washing forklifts, man lifts, etc.
- Degreasing production dies, molds, and fixtures
- Degreasing large parts

RTS 1000



RTS 1000 – LIGHT TO MODERATE DIRT AND OIL, CHEMISTRY RECLAMATION

The RTS 1000 wash water reclamation and recycling system is for light to moderate dirt and oil loads. Built entirely of stainless steel, it is ideal for phosphate pretreatment applications, die washing and dirty equipment. A pre-filter and media filter can be added to the RTS 1000 to increase its dirt handling. The RTS 1000 comes with a regenerative blower to suck up wash water from Riveer above ground racks, shallow in-ground sumps or from a mat. This is the only system of its kind and more than 600 of these units are in operation around the world. Standard filtration with this system includes an inlet screen basket to capture gross particulates prior to the filtration chamber, oil coalescing and oil skimmer, ozone injection, 24/7 recirculation and absolute filtration. Patented continuous vacuum suction system for “dry sump” applications.



FEATURES

- One button GripStart™ operation
- Stainless steel
- 200 gallons of mud settling
- NEMA 4 control panel
- PLC controlled
- Continuous ozone injection
- Oil coalescing
- Automatic oil skimmer
- Absolute filtration to 5 microns
- 24/7 continuous recirculation

APPLICATIONS

Designed for light to moderate mud and oil loads found in washing:

- Forklifts
- Man lifts and booms
- Concrete forms
- Ground support equipment

MARKETS SERVED

- Paint pretreatment
- Aircraft ground support equipment
- Die washing
- Degreasing operations
- Forklift washing

RTS 3000



RTS 3000 – MODERATE SOLIDS

For moderate to heavy mud and oil loads, the RTS 3000 filtration system features inclined plate separators to settle mud in a large initial settling chamber. The chamber is sloped to a valve that automatically purges settled solids. Oil coalescing in conjunction with ozone or bacteria injection completes the initial stage. Wash water is recovered with a run-dry diaphragm pump or a cast iron WSO sump pump where appropriate (this sump pump is capable of pumping large solids up to 3/4"). High-pressure industrial media filtration removes suspended solids, heavy metals and VOCs. This filter is automatically back-washed when needed. A final absolute polishing filter cleans the water down to 5 microns before sending it to a holding tank. Like all Riveer systems, it continuously circulates water and injects ozone to prevent odors.



EXCLUSIVE FEATURES

- Filter automatically back-washes when needed
- Settled mud is automatically purged with high-pressure water
- Oil coalescing with automatic oil skimmer
- Automatic 24/7 ozone injection and/or automatic 24/7 bacteria and air injection with pH adjust
- Continuous recirculation
- 475 gallons of mud settling

APPLICATIONS

Designed for moderate mud loads found in washing:

- Equipment covered in mud, clay, debris and oils
- Industrial and commercial vehicles
- Municipal road vehicles, including salt trucks and street sweepers
- Rental equipment

MARKETS SERVED

- Rental Industry
- Municipal
- Equipment Distributors
- Military
- Construction
- Mining
- Oil and Gas

RTS 4000



RTS 4000 – HEAVIER OILS, MODERATE SOLIDS

The RTS 4000 was designed to handle waste streams where moderate solids and heavy oils are present. This all-stainless steel filtration system features inclined plate separators to settle solids in a large initial settling chamber. Oil is coalesced by passing through a cube of porous polypropylene and then removed from the water by a large disc skimmer. The RTS 4000 recovery works well for either run-dry diaphragm pumps or a sump pump when a pit is present. High-pressure industrial media filtration removes suspended solids, heavy metals, and VOCs. This filter is automatically back-washed when needed. A final absolute polishing filter cleans the water to 5 microns before sending it to a holding tank.

FEATURES

- One button GripStart™ operation
- Stainless steel
- Completely automatic system
- Oil coalescing
- Continuous ozone injection
- High-pressure industrial media filtration
- Exclusive 4000 features:
 - Filter automatically back-washes when needed
 - Settled mud is automatically purged with high-pressure water
 - Oil coalescing with automatic oil skimmer
 - Automatic 24/7 ozone injection and/or automatic 24/7 bacteria and air injection with pH adjust
 - Continuous recirculation



APPLICATIONS

Designed for moderate mud and oil loads found in washing:

- Equipment covered in mud, clay, debris and oils
- Industrial and commercial maintenance equipment
- Municipal road vehicles including salt trucks and street sweepers
- Rental equipment
- Military vehicles on permanent and temporary bases

RTS 5000



RTS 5000 – HEAVY MUD APPLICATIONS

For tough-to-handle, heavy mud applications, the RTS 5000 is the best filtration system yet for heavy dirt operations. A stainless steel filtration chamber incorporates inclined plate separators that drop solids into the RTS 5000's built-in conveyor which drags the mud to an external hopper for easy disposal with a forklift. After the 850-gallon settling chamber, the wash water passes through oil coalescing media and is then pumped through a high-pressure, auto back-washing media filter and then through a polishing filter down to 5 microns. The RTS 5000 is used in applications where water cannons are knocking hopper loads of mud off of construction equipment. The RTS 5000 is frequently used with Riveer's above ground wash racks with optional built-in conveyors or with Riveer-designed concrete pads.



FEATURES

- One button GripStart™ operation
- Only filtration system with built-in mud conveyor
- 850 gallons of mud settling
- High-pressure back-washable media filter
- PLC controlled
- Automatic oil skimmer
- Absolute filtration to 1 micron
- Continuous recirculation
- ¼ yard self-dumping hopper

APPLICATIONS

Designed for heavy mud loads found in washing:

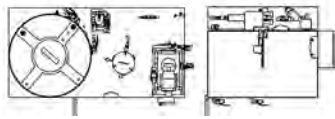
- Equipment covered in mud, clay, debris and oils
- Municipal road vehicles, including salt trucks and street sweepers
- Industrial and commercial vehicles
- Fracking trucks and other oil field equipment
- Rental equipment

RTS SERIES

Riveer Treatment Systems

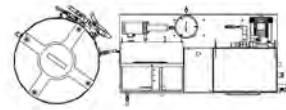
RTS 500 SPECIFICATIONS

Capacity: 336 gallons plus holding tank
Weight: 516 lbs. dry
Wier Dimensions: 48" H x 48" W x 70" L
Electric: 208, 240, 480 single or three phase
Process Rate: Up to 15 GPM
Delivery Pressure: 80-15,000 PSI
Delivery Flow: 2-80 GPM
Material: 304 L stainless steel



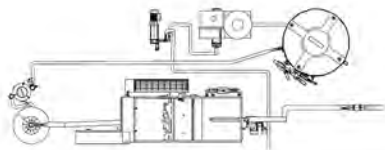
RTS 1000 SPECIFICATIONS

Capacity: 250 gallons plus holding tank
Weight: 2100 lbs. dry
Wier Dimensions: 50" H x 48" W x 102" L
Electric: 208, 240, 480 single or three phase
Process Rate: Up to 30 GPM
Delivery Pressure: 80-15,000 PSI
Delivery Flow: 4-80 GPM
Material: 304 L stainless steel



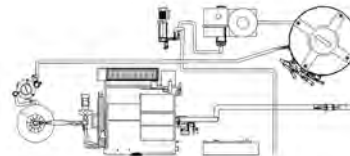
RTS 3000 SPECIFICATIONS

Capacity: 500 gallons plus holding tank
Weight: 860 lbs. dry
Wier Dimensions: 78" H x 36" W x 72" L
Electric: 208, 240, 480 single or three phase
Process Rate: Up to 50 GPM
Delivery Pressure: 80-15,000 PSI
Delivery Flow: 2-80 GPM
Material: 304 L stainless steel



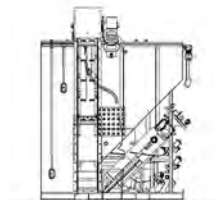
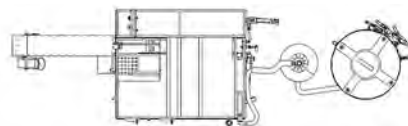
RTS 4000 SPECIFICATIONS

Capacity: 550 gallons plus holding tank
Weight: 707 lbs. dry
Wier Dimensions: 70" H x 4' W x 4' L
Electric: 208, 240, 480 single or three phase
Process Rate: Up to 50 GPM
Delivery Pressure: 80-15,000 PSI
Delivery Flow: 2-80 GPM
Material: 304 L stainless steel



RTS 5000 SPECIFICATIONS

Capacity: 915 gallons plus holding tank
Weight: 3200 lbs. dry
Wier Dimensions: 96" H x 60" W x 130" L
Electric: 208, 240, 480 single or three phase
Process Rate: Up to 75 GPM
Delivery Pressure: 80-15,000 PSI
Delivery Flow: 4-80 GPM
Material: 304 L stainless steel



Riveer employs a quality management system that is ISO 9001:2008 certified.
©2013 RIVEER. All rights reserved. Specifications subject to change. R8.13

RIVEER | 233 VETERANS BLVD | SOUTH HAVEN MI | RIVEER.com | 888.857.7304

RIVEER™

Engineered Wash Water
Recovery Systems