

SPILL RESPONSE TRAILER

Self-Contained
Spill Response
System



- DESIGNED FOR CIVIL, AIRFIELD AND OTHER EMERGENCY CREWS
- SELF-CONTAINED, NO EXTERNAL POWER REQUIRED
- EASY TO OPERATE
- FULLY STOCKED FOR VIRTUALLY ANY HAZMAT CLEAN UP
- AVAILABLE IN CUSTOM CONFIGURATIONS

SELF-CONTAINED SPILL RESPONSE SYSTEM

The Riveer Spill Response Trailer is a self-contained, all-weather system for HAZMAT containment and extraction. Powerful suction pumps collect liquid from up to 75' from the trailer and 15' below trailer deck. A diesel generator supplies lighting and power, and the pumping system can recover 1000 gallons of oil, water, coolant, and/or chemistry in 25 minutes. Tanks are set to drain easily with multi-chamber valves and clear hose for easy monitoring of draining effluent. The oil water separator removes floating oils for simple disposal and the single point drainage system allows for disposal of collected water through a 2" drain line. Additional hose and spill response equipment is available.

Riveer Response Trailer features the same world-class RTS filtration technology used in military installations around the world for wash and recycling. The RTS separates liquids and solids for more efficient recycling of existing water while diverting the HAZMAT and oils to a collection vessel for disposal.



AVAILABLE OPTIONS:

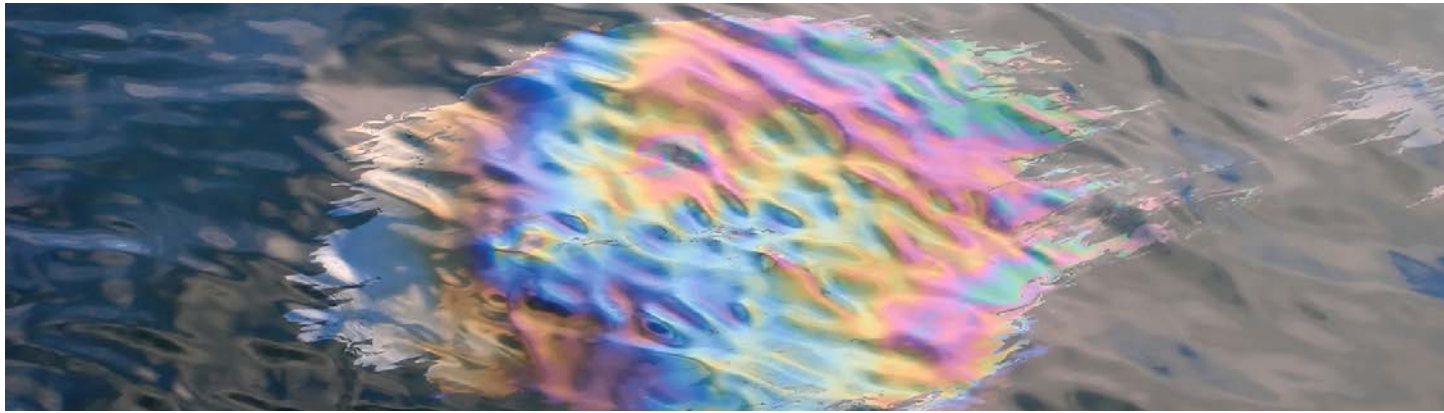
- 120V plug in for heated trailer and battery maintenance
- Spill response kit in protective over-pack
- Filtration levels to remove contaminants to desired level
- Additional tank capacity
- Auto drain system to pump water to remote tank
- External pump wiring to allow drawing from 30' below trailer

RIVEER[™]

Sustainable Washing Systems

SPILL RESPONSE TRAILER

Self-Contained Spill Response System



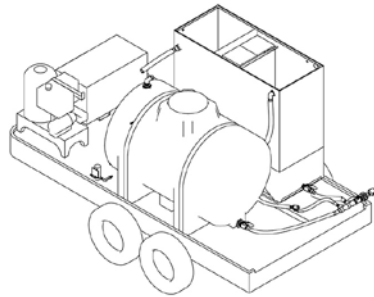
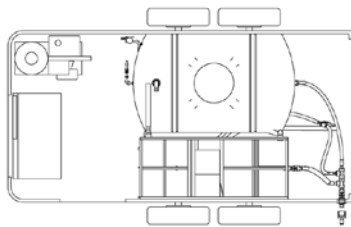
SPILL RESPONSE TRAILER SPECIFICATIONS

Part Number: AWS/TAWSP10175DT/M

Dry weight: 245 lbs.

Dimensions: 168" L x 78" W x 72" H

CAGE: 5X781



ADDITIONAL FEATURES

- 16' x 8' x 8' HD enclosed trailer with HD axles and frame
- Water-cooled diesel generator
- Hot water pressure washer
- Recovery vacuum system with 75' of hose and custom pick-up tools for hard and wet surfaces
- 450 gallon stainless steel oil/water separator
- 350 gallon fresh water tank
- Heated, vented and lit enclosed trailer meets DOT requirements
- Protective clothing and absorbent materials
- The trailer is completely stocked with absorbent material, generators, filtration unit, wash down and suction hoses, containment and clean up tools, PPE, and emergency lighting.
- Storage tank suited to hold oil, water, fuel, jet fuel, diesel, chemicals, wetting agents, soaps, detergents, and most acids.
- Maximum temperature to 150°



Riveer employs a quality management system that is ISO 9001:2008 certified.
©2014 RIVEER. All rights reserved. Specifications subject to change. R2.14

RIVEER | 233 VETERANS BLVD | SOUTH HAVEN MI | RIVEER.com | 888.857.7304



Sustainable Washing Systems