

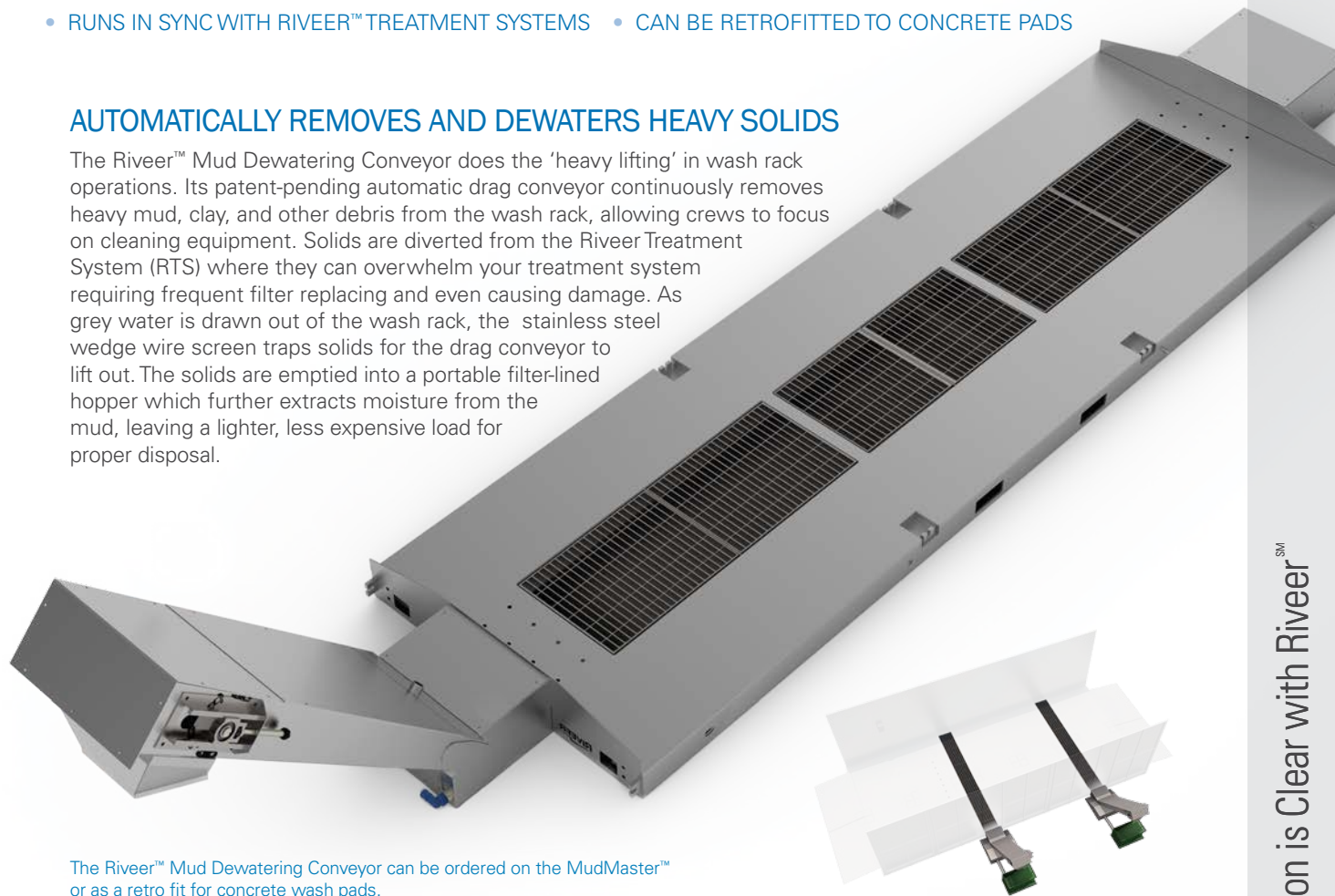
MUD DEWATERING CONVEYOR

CONTINUOUS LIQUID/SOLIDS SEPARATION FOR RIVEER MUDMASTER™ AND VWS WASH WATER RECOVERY SYSTEMS

- AUTOMATICALLY REMOVES HEAVY SOLIDS FROM WASH RACK AND DEPOSITS INTO A PORTABLE HOPPER
- ELIMINATES MANUAL DEMUCKING OF TROUGHS
- RUNS IN SYNC WITH RIVEER™ TREATMENT SYSTEMS
- REDUCES LOAD MOISTURE FOR LOWER DISPOSAL COSTS
- REDUCES WEAR ON FILTERS AND SAVES ON CONSUMABLES
- CAN BE RETROFITTED TO CONCRETE PADS

AUTOMATICALLY REMOVES AND DEWATERS HEAVY SOLIDS

The Riveer™ Mud Dewatering Conveyor does the 'heavy lifting' in wash rack operations. Its patent-pending automatic drag conveyor continuously removes heavy mud, clay, and other debris from the wash rack, allowing crews to focus on cleaning equipment. Solids are diverted from the Riveer Treatment System (RTS) where they can overwhelm your treatment system requiring frequent filter replacing and even causing damage. As grey water is drawn out of the wash rack, the stainless steel wedge wire screen traps solids for the drag conveyor to lift out. The solids are emptied into a portable filter-lined hopper which further extracts moisture from the mud, leaving a lighter, less expensive load for proper disposal.



The Riveer™ Mud Dewatering Conveyor can be ordered on the MudMaster™ or as a retro fit for concrete wash pads.

RIVEER™
Engineered Wash Water
Recovery Systems

The Solution is Clear with Riveer™

MUD DEWATERING CONVEYOR

ADDITIONAL FEATURES

- Moves mud at a 4 ft/min. crawl
- 10,100 in-lb Sumitomo gearmotor
- 2,200 lbs of drag force
- Auto-reverse function prevents damage if stopped by obstruction
- Replaceable x348 galvanized chain
- Replaceable Poly Flights (21 pcs)
- Replaceable Metal Flights (10 pcs)
- 130-gallon trough holding capacity
- Heavy duty bar grating
- .040 in stainless steel wedge wire filter (standard - others available)
- Hopper liner further dewateres mud
- All welded steel construction and powder coated to prevent rusting

HOPPER SPECIFICATIONS

- Standard hoppers have 1/4 cu. yard or 2000 lb load capacity
- Dimensions: 49" L x 30 3/4" W x 26 1/2" H, 305 lbs*
- Fork Openings: 2 1/2" L x 8 1/2" W x 20" H
- Can be ordered on casters and/or fork pockets
- Self-dumping, self-righting, and self-locking from fork lift
- Safety retaining chain, safety latch, and remote trip assembly included
- Heavy-duty all welded construction - 12 gauge body with 8 gauge base
- Stackable up to 3 high when empty

* Larger sizes available upon request

SHIPPING SPECIFICATIONS

Part Number: RIV 214212-1000

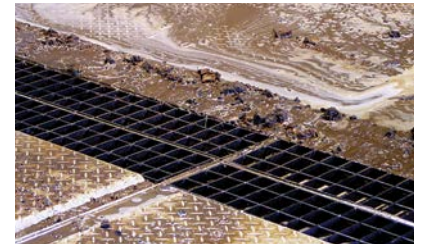
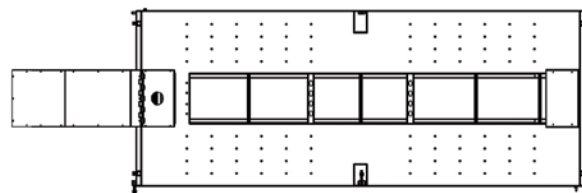
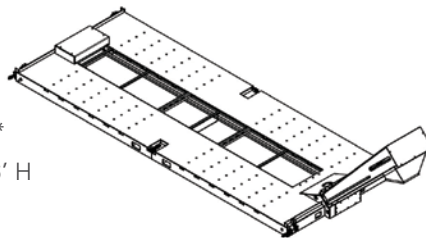
Rack Dimensions: 7' L x 18' W x 6" H*

Overall Dimensions: 7' L x 26.6' W x 6' H

Dry Weight: 3500 lbs

CAGE: 5X781

* Standard dimensions, can be customized



Waste water is washed down into the rack's troughs and then drawn out into the filtration system. A screen ensures that heavy solids don't get into the filtration system.



Patent-pending dewatering conveyor turns heavy mud into lighter, dryer dirt. After the mud is dragged up and out into the hopper, the wash water drains through a 100-micron hopper liner.



Riveer employs a quality management system that is ISO 9001:2008 certified.
©2013 RIVEER. All rights reserved. Specifications subject to change. R2.13

RIVEER | 233 VETERANS BLVD | SOUTH HAVEN MI | RIVEER.com | 888.857.7304

RIVEERTM

Engineered Wash Water
Recovery Systems